



**Parks and Trails Commission Work Session Agenda
February 20, 2025 – 6:00 pm**

- 1. Call to Order / Roll Call**
- 2. South Fork Rush Creek Stream Restoration***
- 3. Unscheduled Items**
- 4. Adjournment**

**HYBRID MEETING OPTION
AVAILABLE**

The public is invited to attend the regular Parks and Trails Commission meetings at City Hall.

Meeting Via Telephone/Other Electronic Means

Call-in Instructions:

+1 312 626 6799 US

Enter Meeting ID: 860 2285 3009

Video Link and Instructions:

<https://us02web.zoom.us/j/81597426469>

visit <http://www.zoom.us> and enter

Meeting ID: 860 2285 3009

**Please note in-person comments will be taken at the scheduled meeting where noted.*

Comments received via email to Recreation Supervisor Christensen Buck at

jchristensenbuck@corcoranmn.gov or via public comment cards will also be accepted. All email and public comment cards must be received by the Wednesday prior to scheduled Parks and Trails meeting.

For more information on options to provide public comment visit:

www.corcoranmn.gov

***Includes Materials** - Materials relating to these agenda items can be found in the House Agenda Packet by door.



City of
Maple Grove

South Fork Rush Creek Stream Restoration



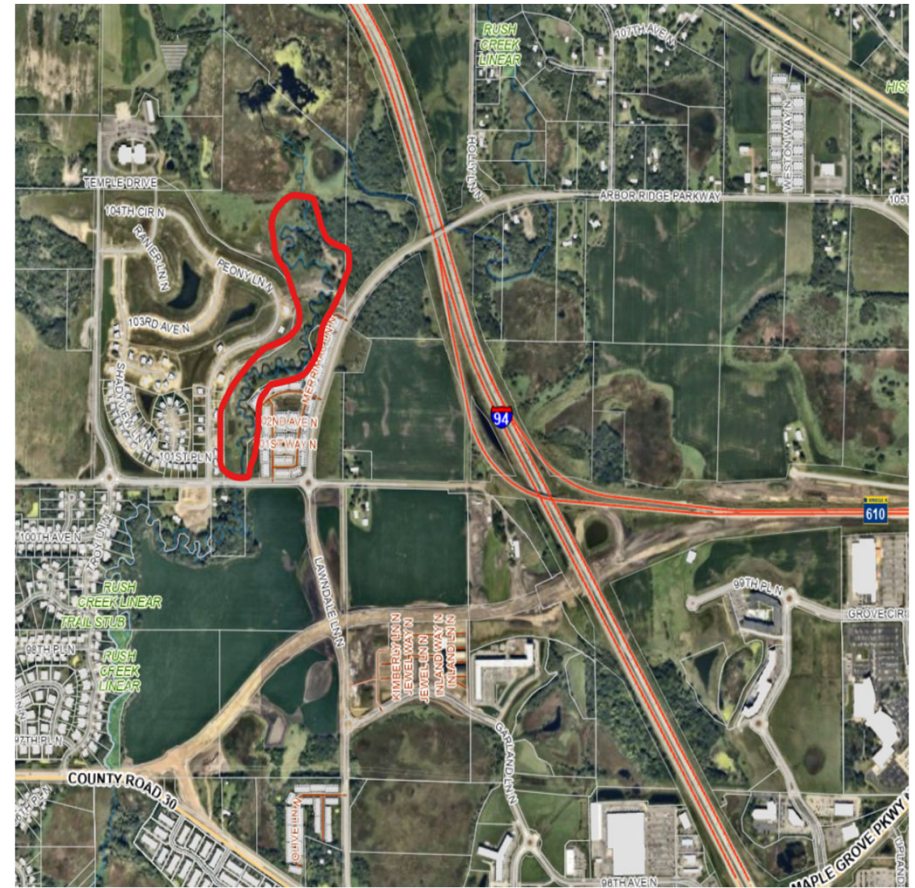
Timeline

- December 2021 - Feasibility study
- Fall 2022 - Elm Creek Watershed CIP
- November 2022 - Coop Agreement with Elm Creek
- Spring 2023 – Design
- May 2023 – Final Design
- July 2023 – Contract Award
- October 2023 - EAW Negative Declaration
- December 2023 – Begin Construction
- October 2024 – Substantial Completion
- October 2026 – End of vegetative maintenance period



Project Description

- Approximately 5500 linear feet or just over one mile
- In NW Maple Grove from 101st Avenue to confluence with the North Fork Rush Creek



Summary of Issues

- Stressed ecological integrity
 - Altered hydrology and habitat
 - Excess sediment
 - Excess phosphorus
 - Low dissolved oxygen resulting in impairment
 - Mass wasting of stream banks
 - Invasive species (buckthorn, garlic mustard, reed canary grass)



Improvements

- Erosion repair/stabilization
- Toe wood
- Floodplain re-connectivity
- Enhanced pollinator habitat
- Riffles
- Bridge/Trail for access
- Invasive specie management



Erosion Repair/Stabilization



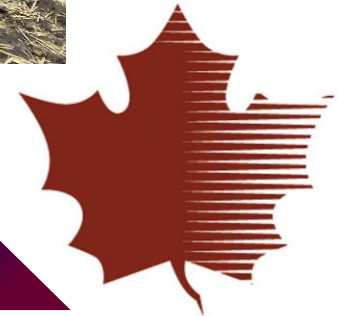
Erosion Repair/Stabilization



Toe Wood



Floodplain Re-connectivity



Enhanced Pollinator Habitat



Riffles



Bridge & Trail



Funding Partners

- Estimated project cost is \$2,500,000
- Funding Partners include:
 - City of Maple Grove - \$1,373,347.00
 - Elm Creek Watershed - \$861,660.00
 - BWSR (WBIF) - \$314,153.00
 - DNR Conservation Partners grant - \$39,620.00*



Acknowledgements & Questions

- Design Engineer – Stantec
- Contractor – Sunram Construction
- Funding
 - Elm Creek Watershed
 - BWSR – Clean Water, Land & Legacy
 - MN DNR Conservation Partners

